


**Be sure
you've got
the real FC2!**



When you decide to use a female condom, make sure it is an FC2 female condom. FC2 female condom meets high quality standards set by international health agencies like WHO (World Health Organization) and FDA (US Food and Drug Administration). You can see whether the female condom pack contains a real FC2 by checking that at least one of the following is visible on the packaging:

- 
- FC2
- The Female Health Company (FHC)

www.supportworldwide.org | info@supportworldwide.org

FC2 female condom is manufactured by The Female Health Company (FHC).
Chicago USA/London UK/Malaysia



**The FC2 female condom
for enjoyable safer sex**

The FC2 female condom prevents

- **unintended pregnancy**
- **sexually transmitted infections (STIs), including HIV**

Are you planning a pregnancy? Or do you want to wait to have your next child? The FC2 female condom is a safe and enjoyable family planning method. It also protects against sexually transmitted infections (STIs), including HIV.



What is the FC2 female condom?

The FC2 female condom is a soft, smooth condom. It is easy to insert in the vagina. FC2 has an inner and an outer ring that hold it in place during sex. FC2 has a perfect fit. It lines the walls of the vagina, allowing the penis to move freely inside the condom during sex, the silicone-based lubricant giving a natural sensation.

Enjoyable

Both men and women enjoy sex with the FC2 female condom. FC2 has many advantages:

- The material is smooth and soft.
- It feels natural because it quickly warms up to body temperature.
- The female condom isn't tight around the penis and gives the man a natural sensation.
- FC2 can be inserted either a few hours or just before sex.
- FC2 can be used by people who are allergic to latex.
- It is made of a synthetic material called nitrile.
- You don't need to see a doctor before you start using female condoms. FC2 doesn't affect your body and it doesn't contain hormones.

Safe

Just like a male condom, the FC2 female condom completely blocks sperm and the bacteria or viruses that cause STIs. The outer ring provides added protection against STIs by covering the woman's external sex organs and the base of the penis. FC2 is for single use only.

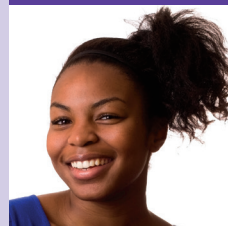


Noa:

I'm totally in control. No risk of pregnancy. No risk of STIs. No problems with boyfriends who refuse to wear a condom. The female condom is my first choice for safe sex!

Jonathan:

After having struggled with male condoms, I'm very happy my girlfriend and I switched to FC2 female condoms. It feels like there's no condom at all. Sex is great again!



Zawadi:

It's great that I can use FC2 without having to see a doctor. In the beginning I practised inserting the condom on my own. It was easier than I'd expected. Now I feel very comfortable using it with my boyfriend.

Patrick:

My erection often disappears when I put on a male condom. That's why I introduced the FC2 female condom to my wife. She is using it now. We're both happy. Our sex life is much more exciting.



Tara:

My family is complete with three children. With FC2 female condoms I'm not worried about getting pregnant again. I have no stress and can completely relax during sex. FC2 feels very natural.